

February 2018

Amalgatome MD Blade Information Sheet:

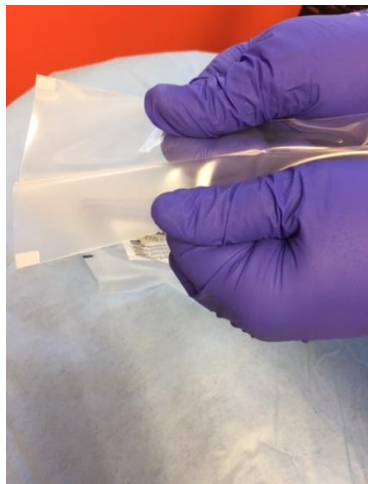
Please review the following information and share with any recovery technicians that use the Amalgatome MD Blade during procedures. We would like to inform you of the following packaging improvements.

Part #: X100457- Amalgatome MD Blade (please note the additional Excision Ring™ Blade description)

- **Blue Ball Bearing Strip** (this was communicated previously on the color change of the product). There is no change to fit, form or function.
- **Pouch.** You will find the pouch is a high-density poly peel pouch that is vacuumed sealed. This pouch allows for greater protection of the inside contents and helps to reduce any visual imprints on the pouch from the inside edges.
- **Clamshell.** The entire blade is now protected by a circular plastic tray to house the sharp blade edge and teeth. This way the entire blade is encapsulated within the clamshell to offer greater protection from the blade edge as well as the teeth from imprinting on the pouch.
- **Yellow Safety Sticker.** The yellow caution sticker has been added as an additional warning for the internal contents of the clamshell. It is a visual guide for staff to follow when opening the clamshell using aseptic technique.
- **Please see the pictorial guide below as a quick reference.**



Amalgatome MD Peel Pouch



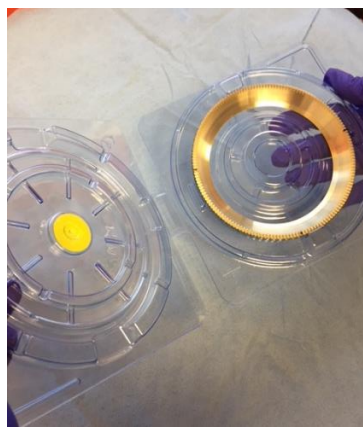
Peel opening at top



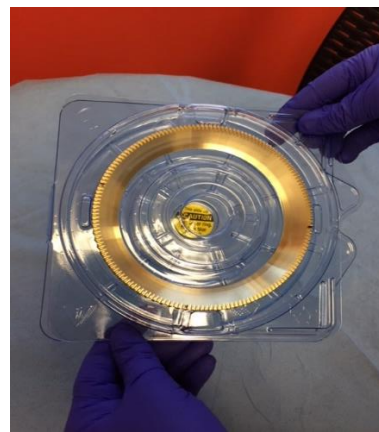
Clamshell tray containing blade



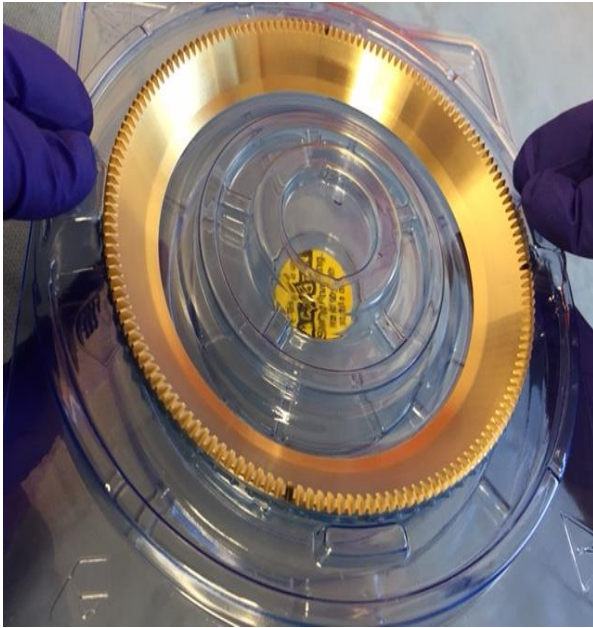
Yellow Safety Label Facing up



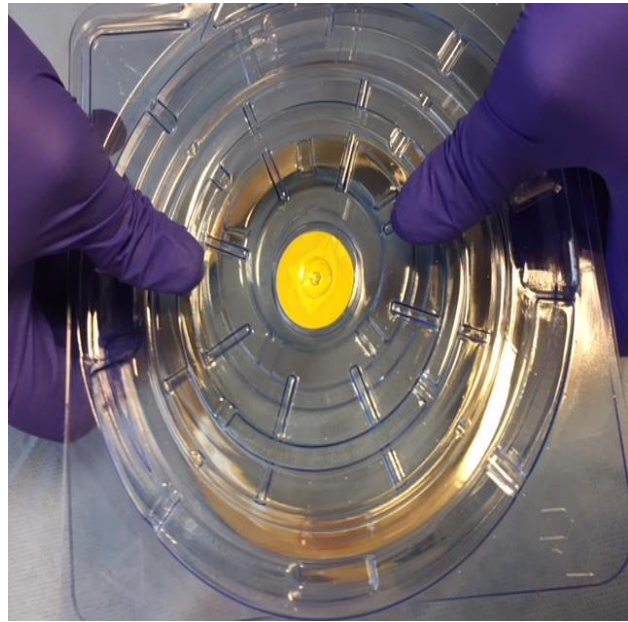
Pull clamshell open using tabs



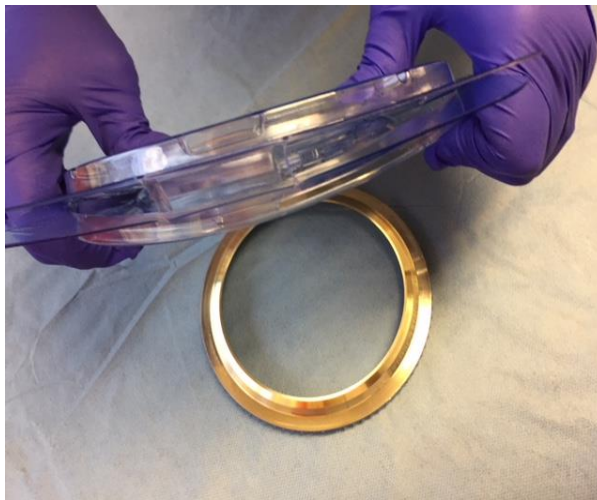
Fold top lid under-find thumb tabs



Locate and place fingers on "REMOVAL TABS"



Turn tray over and "DEPRESS" tabs to release blade onto surface



After pressing tabs, blade releases (TEETH DOWN) and is ready for placement into the Amalgatome MD. ONLY HOLD BLADE BY BLUE STRIPS. The clamshell can be saved and used after blade is removed from device after use for protective enclosure for transport to sharps container.

Thank you for using the Amalgatome MD, we appreciate your business. Should you have any further questions please contact your Exsurco Medical sales rep or myself, at the below number.

Linda Sopko
Product Manager
lindasopko@exsurco.com
40-204-3286