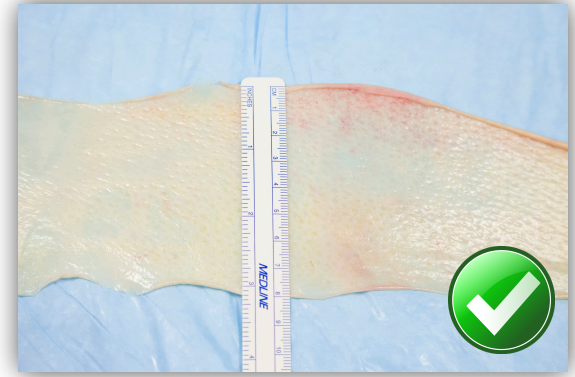


AMALGATOME® MD BEST PRACTICE TIPS

- Please review the following skin recovery technique reminders and tips to help remind recovery technicians as to proper skin recovery technique.
- These quick tips and reminders can serve as training tools and reminders for “best practice” in skin recovery.
- At anytime during use or operation of your Amalgatome® MD, if there are questions pertaining to training and technique please contact your Exsurco Medical sales representative or email at: sales@Exsurco.com.

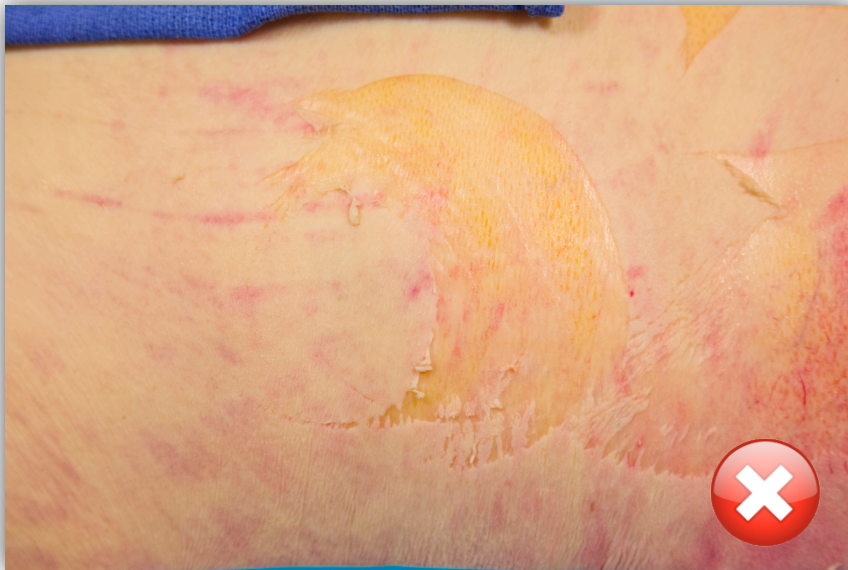
SKIN RECOVERY | TECHNIQUE REMINDERS



BEST PRACTICES PROPER ANGLE DURING RECOVERY

- Notice the operator is ensuring the proper 3 to 4 inch (8 to 10 cm) recovery of the skin graft by ensuring the diameter of the blade is in contact with the recovery area.
- The operator also ensured the edges are uniform and not chattered.

SKIN RECOVERY | TECHNIQUE REMINDERS



BEST PRACTICES PROPER ANGLE DURING RECOVERY

- If you start a graft and it does not meet the desired thickness and width, or recovering inadequate skin grafts, it may be best to stop recovering that graft and start a new one.

SKIN RECOVERY | TECHNIQUE REMINDERS

BEST PRACTICES ON THE ANTERIOR TORSO AND BUTTOCKS

- Notice the operator is ensuring the proper 4 inch (10 cm) recovery of the skin graft by ensuring the diameter of the blade is in contact with the recovery area.



SKIN RECOVERY | TECHNIQUE REMINDERS

BEST PRACTICES ON THE POSTERIOR TORSO

- Notice the operator is allowing the depth gauge to flatten the skin prior to the blade cut.
- The operator can change the depth during the recovery without stopping.



SKIN RECOVERY | TECHNIQUE REMINDERS

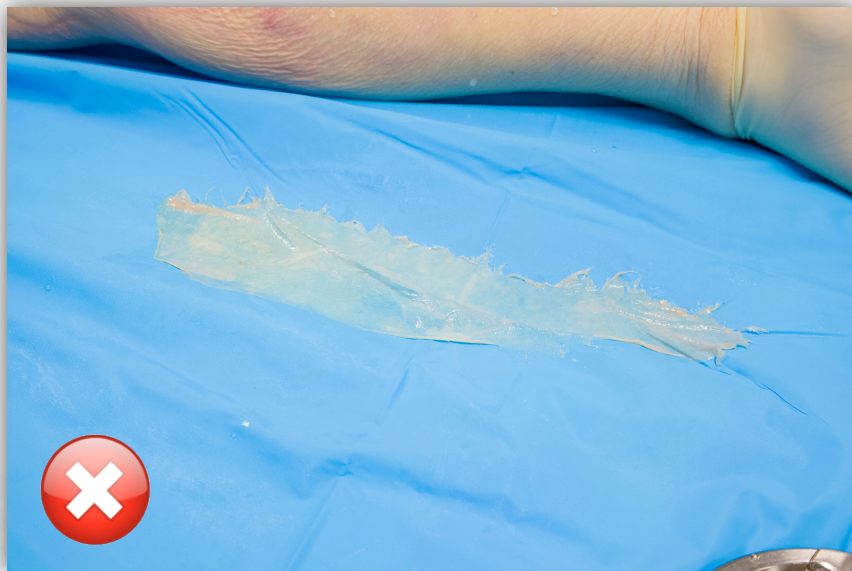


BEST PRACTICES ON THE LEGS

- Notice the operator is not applying too much pressure and using different areas on the head to recover great skin grafts.
- The assist recovery technician is not pulling too tight on the recovered skin graft.

SKIN RECOVERY | TECHNIQUE REMINDERS

Uneven, chattered edges



Uniform, smooth edges



BEST PRACTICE FOR UNIFORM EDGES ON SKIN GRAFT

- Steady/slow speed required. Moving too fast with the Amalgatome MD Skin Recovery Device does not allow the user to adjust to body contours, or irregularities in tissue during use.

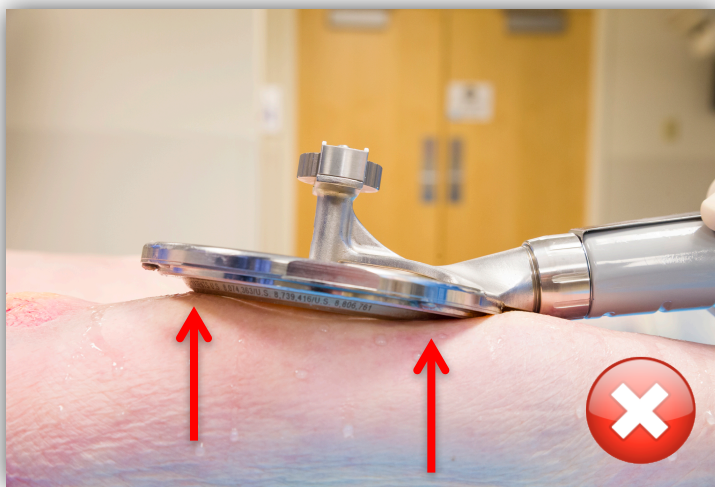
SKIN RECOVERY | TECHNIQUE REMINDERS



SKIN GRAFT NOT UNIFORM OR TOO THICK/NARROW IN MIDDLE

- The depth gauge plate on the instrument is designed to flatten the skin as it approaches the cutting edge.
- The operator does not need to provide additional pressure or too much angle on the device.
- This will cause the tissue to compress itself into the device, resulting in skin grafts that are thick in the middle and thin on the edges, and too narrow.

SKIN RECOVERY | TECHNIQUE REMINDERS



INADVERTENTLY DISSECTED SKIN GRAFT DURING RECOVERY

- Remember the device head cuts with the trailing edge, and attempting to keep the instrument “too flat” may inadvertently cause the operator to lift the cutting edge away from the recovery site.
- The sound of the motor will change and it will sound like it is over working.

SKIN RECOVERY | TECHNIQUE REMINDERS



CRESCENT SHAPED APPEARANCE IN SKIN GRAFT

- Steady/slow speed required. Moving too fast with the Amalgatome MD Skin Recovery Device does not allow the user to adjust to body contours, or irregularities in tissue during use.
- This results in crescent moon shaped patterns.